

Kitchen formed within existing building with concrete block wall extended as required to enclose building footprint and clad externally with timber boarding on battens over a dpm and finished internally with plasterboard on an insulated timber frame.

New timber staircase to first floor apartment enclosed within a concrete block wall.

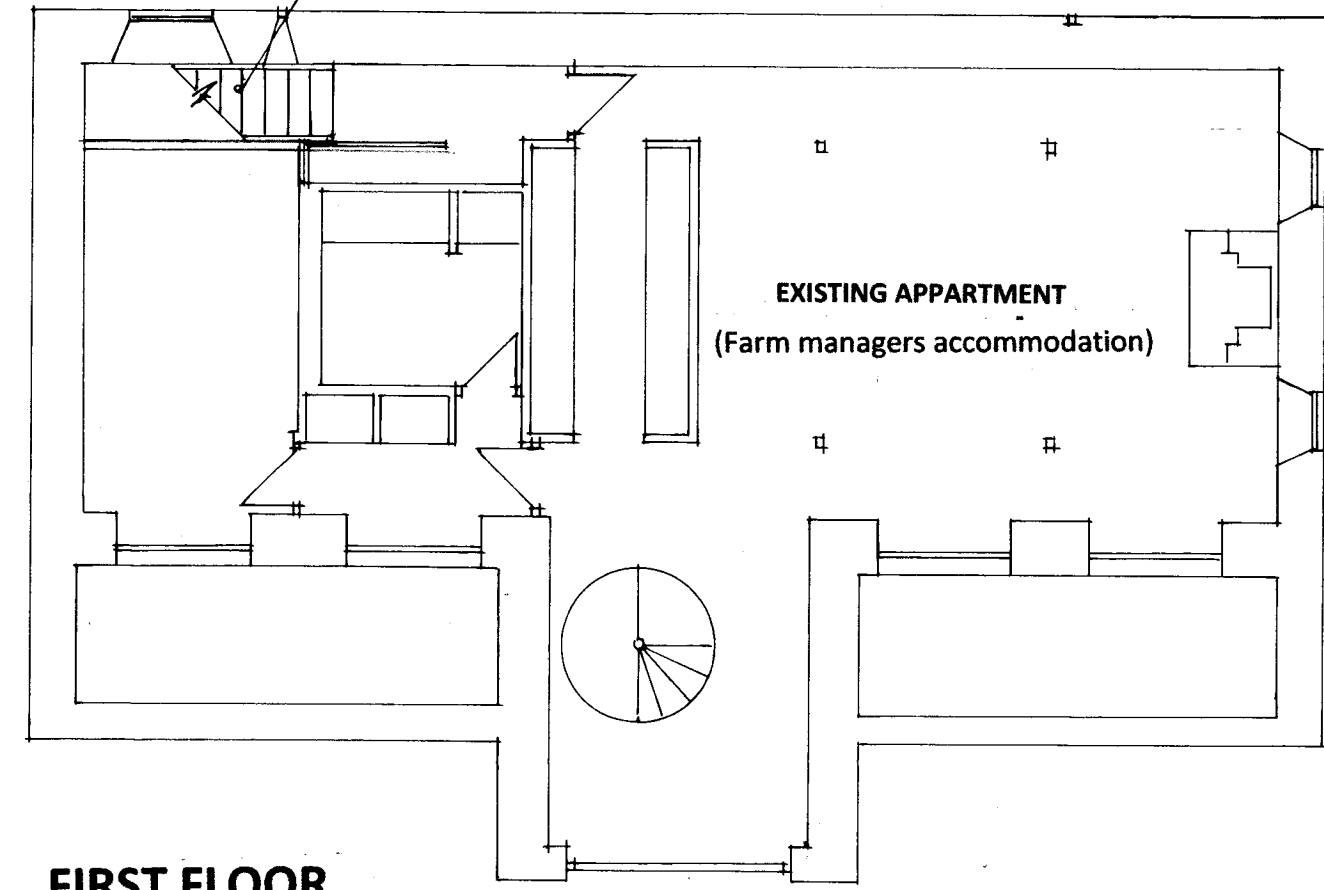
New timber staircase to first floor apartment, enclosed within concrete block wall.

New external timber doors. (See elevations)

Powder coated aluminium glazed screen doors.

New access door to apartment over.

EXISTING APARTMENT
(Farm managers accommodation)



FIRST FLOOR

Previously blocked up opening to be reopened.

Male wc formed with insulated stud partitions.

New suspended timber floor to line with existing and supported on concrete sleeper walls.

New powder coated aluminium folding screen doors to replace existing aluminium doors.

Rev C 21-1-26 Concrete floor omitted, renovate stone edging

Rev B 14-8-25 Further general amendments

Rev A 22-5-25 General amendments.

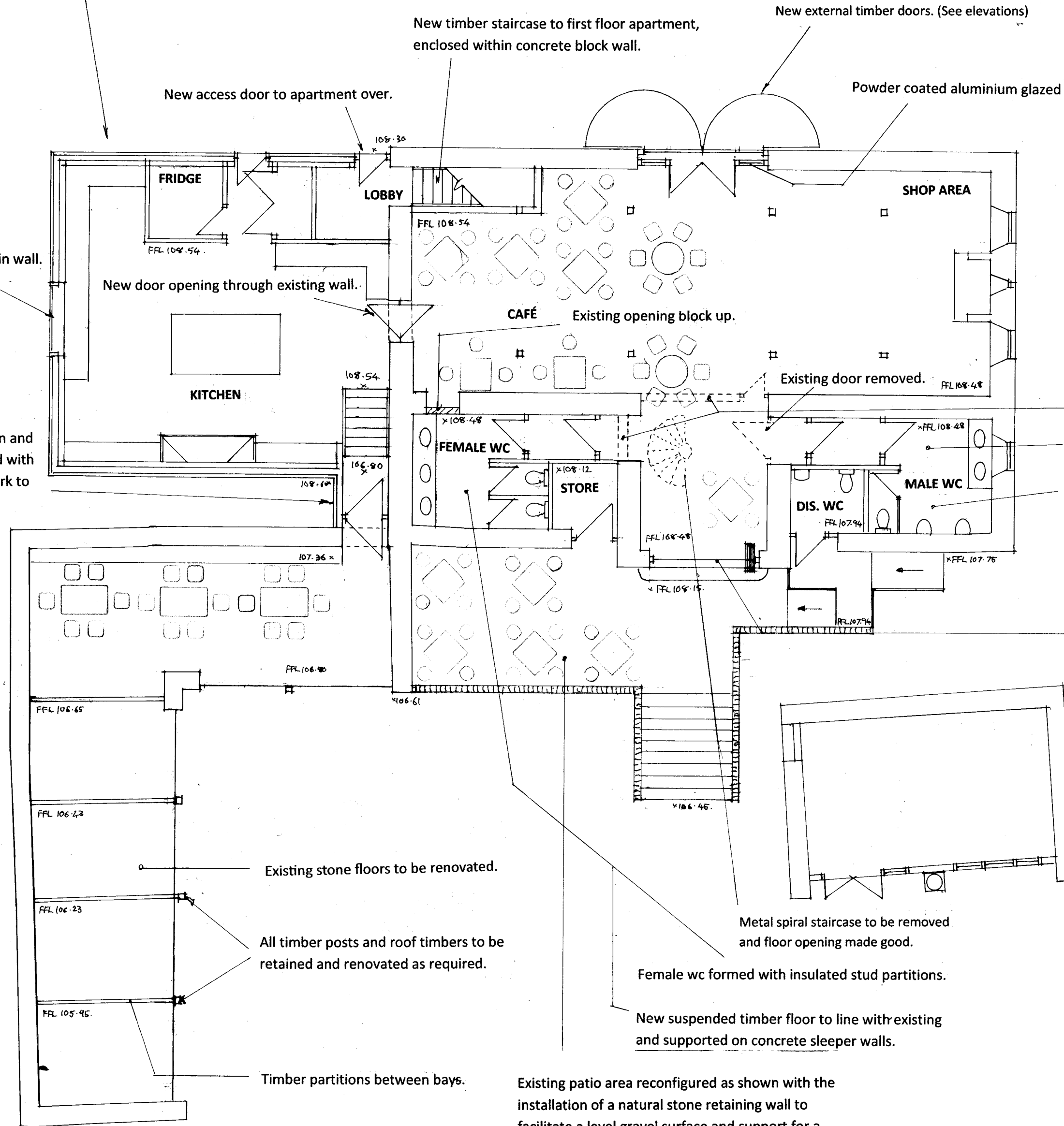
Client BIBURY TROUT FARM		
Project SHOECROFT BARN, BIBURY CONVERSION TO A CAFÉ WITH RETAIL AREA.		
Drawing FLOOR PLANS AS PROPOSED		
Drg No 1621/500G	1:100@A2	24-2-25

**ANDREW P JONES
ASSOCIATES**
Development Consultants
FLAXFIELD HOUSE, POST OFFICE LANE,
CLEEVE HILL, CHELTENHAM,
GLOUCESTERSHIRE. GL52 3PS
TELEPHONE/FAX 01242 676025
e-mail aj@apjassociates.co.uk

Serving hatch formed in wall.

New door opening through existing wall.

Link between kitchen and existing barn formed with timber clad blockwork to match.



Existing stone floors to be renovated.

All timber posts and roof timbers to be retained and renovated as required.

Timber partitions between bays.

Existing patio area reconfigured as shown with the installation of a natural stone retaining wall to facilitate a level gravel surface and support for a new stairway. Wall extend in height to form a balustrade wall.

Metal spiral staircase to be removed and floor opening made good.

Female wc formed with insulated stud partitions.

New suspended timber floor to line with existing and supported on concrete sleeper walls.

GROUND FLOOR

SCALE BAR 1:100

