



**Proposed South Elevation - Front Elevation**

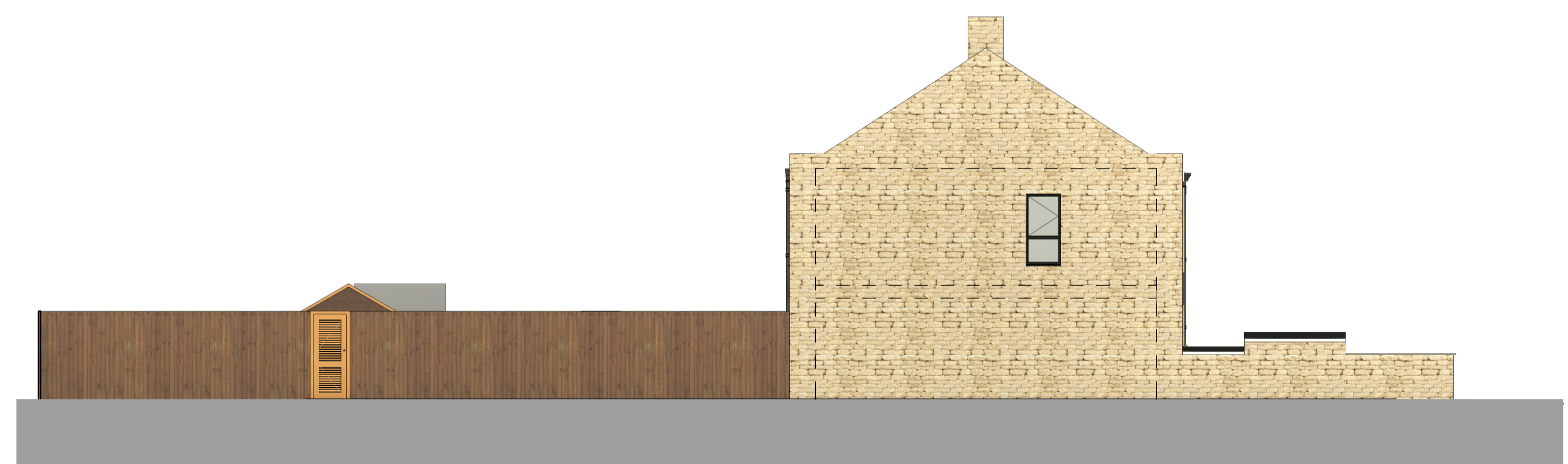
1 : 100

Unit 7 2b 4p @ 79 sqm / 850 sqft	Unit 8 2b 4p @ 79 sqm / 850 sqft	Unit 9 2b 4p @ 79 sqm / 850 sqft	Unit 10 2b 4p @ 79 sqm / 850 sqft	Unit 11 2b 4p @ 79 sqm / 850 sqft	Unit 12 2b 4p @ 79 sqm / 850 sqft	Unit 13 2b 4p @ 79 sqm / 850 sqft
----------------------------------------	----------------------------------------	----------------------------------------	-----------------------------------------	-----------------------------------------	-----------------------------------------	-----------------------------------------



**Proposed North Elevation - Back Elevation**

1 : 100



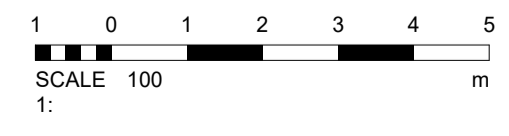
**Proposed West Elevation - Side Elevation**

1 : 100



**Proposed East Elevation - Side Elevation**

1 : 100



**DISCLAIMER NOTES:**

- THIS DOCUMENT IS COPYRIGHT OF THE ORIGINATOR AND MUST BE TREATED AS CONFIDENTIAL.
- THIS DOCUMENT MUST NOT BE ALTERED, REPRODUCED OR DISTRIBUTED WITHOUT PRIOR WRITTEN CONSENT OF THE ORIGINATOR.
- THIS DOCUMENT MUST NOT BE ALTERED - THE ORIGINATOR ACCEPTS NO RESPONSIBILITY FOR ANY DISCREPANCIES ARISING AS A RESULT OF THE ORIGINATOR'S INFORMATION BEING ALTERED BY OTHERS.
- ANY DISCREPANCY MUST BE REPORTED TO THE ORIGINATOR.
- DO NOT SCALE THIS DOCUMENT - USE FIGURED DIMENSIONS ONLY.
- ALL DIMENSIONS MUST BE CHECKED ON SITE PRIOR TO COMMENCEMENT OF ANY RELATED WORKS.
- THIS DOCUMENT MUST BE READ IN CONJUNCTION WITH ALL SUPPORTING DOCUMENTS PRODUCED BY THE ORIGINATOR AND OTHER PROJECT DISCIPLINES.
- THE ORIGINATOR ACCEPTS NO RESPONSIBILITY FOR THE ACCURACY OF BACKGROUND INFORMATION PRODUCED BY THIRD PARTIES - THIS MUST BE TREATED AS INDICATIVE ONLY.
- USERS OF THIS DOCUMENT ARE RESPONSIBLE FOR CHECKING WHICH REVISION IS CURRENT.
- THE DOCUMENT STATUS "INFORMATION" OR "PRELIMINARY", INDICATES THAT THIS DRAWING IS FOR REFERENCE PURPOSES ONLY - THE ORIGINATOR WILL ACCEPT NO RESPONSIBILITY FOR THE COMPLETENESS OF INFORMATION UNDER THIS STATUS.
- THE DOCUMENT STATUS "RECORD" OR "AS BUILT" HAS BEEN PREPARED, IN PART, BASED UPON INFORMATION FURNISHED BY OTHERS. WHILE THIS INFORMATION IS BELIEVED TO BE RELIABLE, THE ORIGINATOR ASSUMES NO RESPONSIBILITY FOR THE ACCURACY OF THIS "RECORD" OR "AS BUILT" DOCUMENT OR FOR ANY ERRORS OR OMISSIONS THAT MAY HAVE BEEN INCORPORATED INTO IT AS A RESULT OF INCORRECT INFORMATION PROVIDED TO THE ORIGINATOR. THOSE RELYING ON THE "RECORD" OR "AS BUILT" DOCUMENT ARE ADVISED TO OBTAIN INDEPENDENT VERIFICATION OF ITS ACCURACY.

**DRAWING NOTES:**

- CDM REGULATIONS 2015
- SIGNIFICANT OR NON-OBVIOUS RISKS AND RISKS WHICH ARE DIFFICULT TO MANAGE ARE IDENTIFIED ON THIS DRAWING USING THE FOLLOWING SYMBOL IDENTIFIED TO THE RIGHT WITH BRIEF ACCOMPANYING TEXT. FOR FURTHER DETAILS OF THE RISKS IDENTIFIED BY DESIGNERS, REFERENCE SHOULD BE MADE TO CDM HAZARD REGISTER.

PO1	First Issue	10/05/2024	CT	TB
REV	DESCRIPTION	DATE	BY	CHKD



Tower Wharf  
Cheese Lane  
Bristol  
BS2 0JJ  
WWW.RIDGE.CO.UK



IN ASSOCIATION WITH:

PROJECT:  
**Bromford Housing Down Ampney Football and Social Club Cheltenham**

TITLE:  
**Proposed Elevations - 2 Bedroom 4 Person Terrace**

DRAWN BY:	CT	SCALE:	1 : 100 @ A1
CHECKED BY:	TB	DATE:	10/05/2024

STATUS:  
**PLANNING**

DRAWING No:	PROJECT:	ORG:	ZONE:	LEVEL:	TYPE:	ROLE:	NUMBER:	REV:
5017991	RDG	XX	XX	D	A	220101	P01	