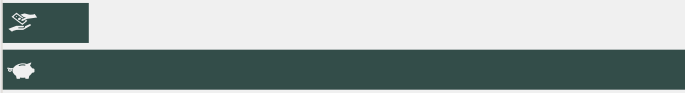
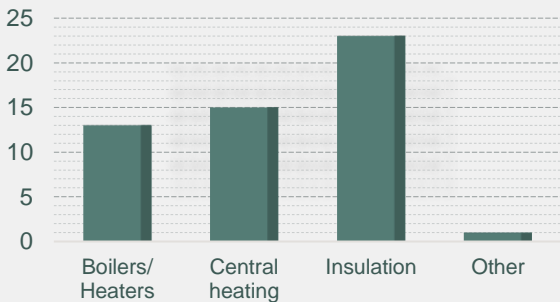


Fuel poverty in the Cotswolds is often masked by a combination of the affluence of many in the District, its large area and sparse population. Many residents find their circumstances changing rapidly, with illness, loss of income or retirement – leaving them with large, poorly performing homes to heat. With many homes off the gas grid, residents often rely on expensive, polluting solid fuel as their primary heating source. The outskirts of Cirencester have particularly high levels of fuel poverty at over 15%

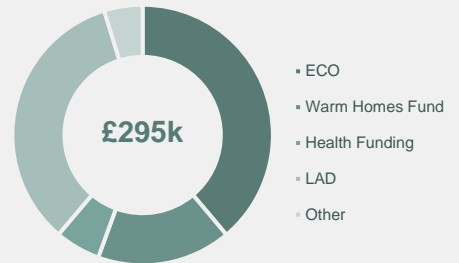
For every £1 invested in Warm and Well, Cotswold District residents benefit from support and funding worth **£5.22**



52 energy-saving home improvements

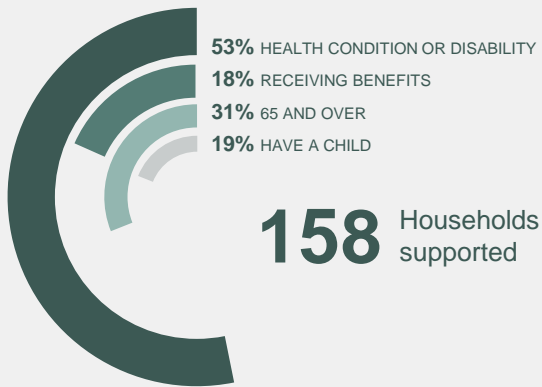


Additional Funding Accessed



Lifetime savings of
1,723
tonnes CO2

The equivalent of making
490 Cotswold homes carbon neutral for a year



238 Engagements with clients

49 Properties improved

20 Referrals from partner organisations

Cotswold District

4,188

of 40,481 households considered in fuel poverty

% In Fuel Poverty
2015-2020



11.4% of South West
10.3% of Cotswold District



£1,090

average annual fuel bill

Trends and Insights

- The average age of caller to W&W in Cotswold District is 68 – this is considerably higher than the rest of the region (overall average of 54). A third of all Cotswold clients are over 65.
- With the current energy and cost of living crisis there have been increases in calls asking for advice on reducing their energy bills. People are also thinking ahead, asking about funding for energy efficiency measures to be installed in time for winter. We foresee the number of people asking for help falling outside of usual criteria for funding but nevertheless, experiencing the same effects as those who are deemed to be living in fuel poverty.
- 174 front line staff members and members of the public were engaged with at events during March which will hopefully convert into increased phonecalls and support in the area over the next few months.