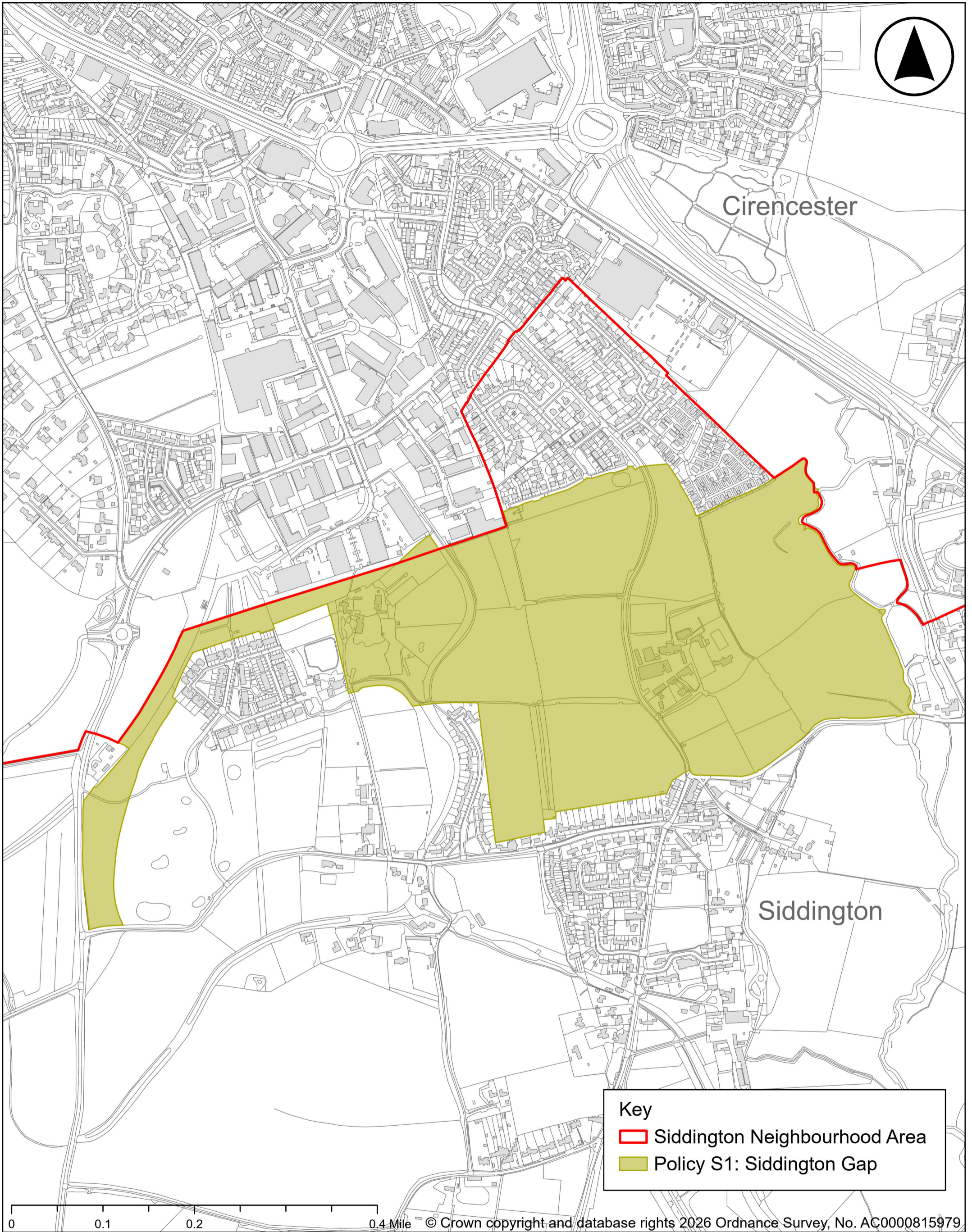


Siddington Parish Neighbourhood Development Plan

Policies Overview Map



COTSWOLD
District Council

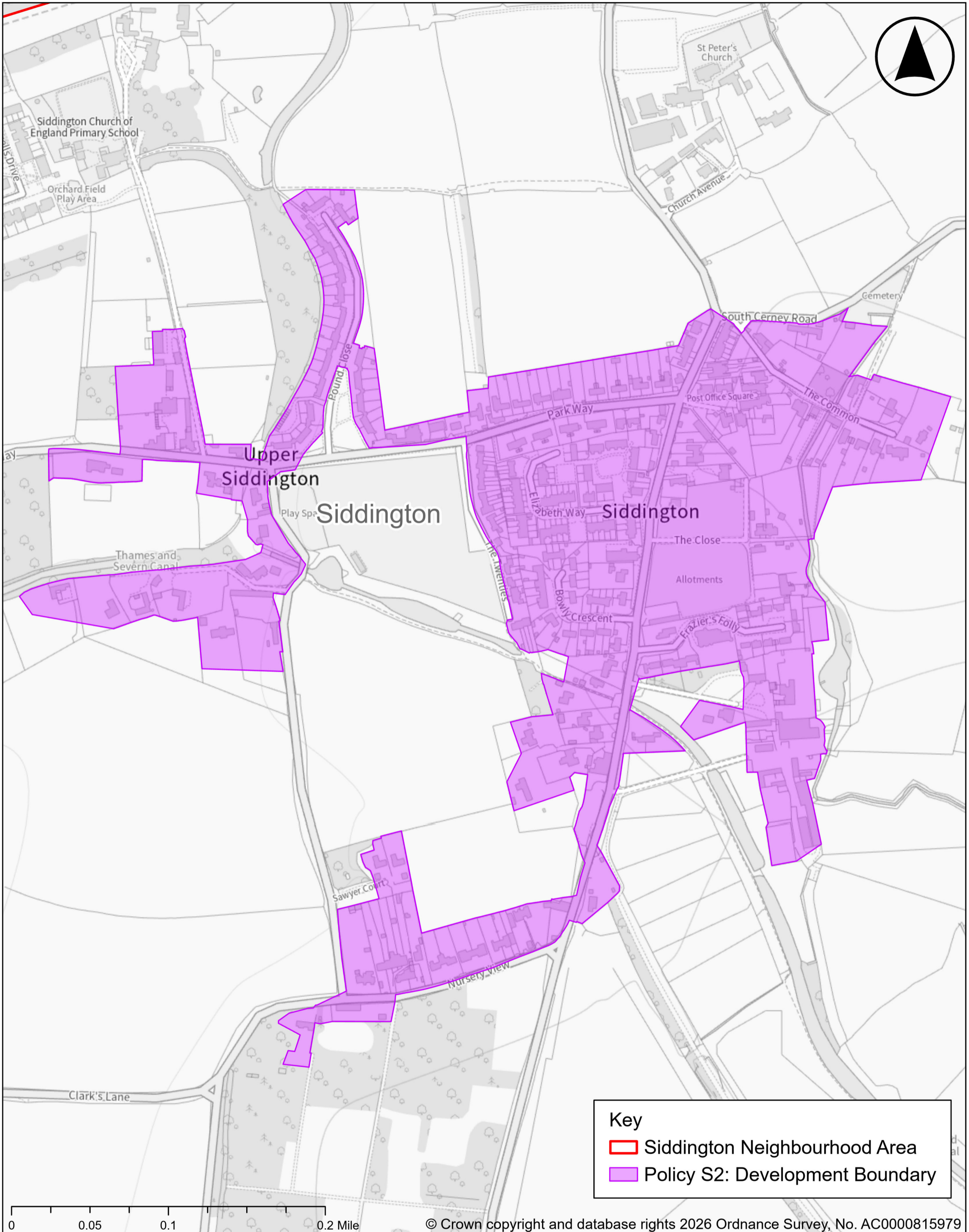


Siddington Parish Neighbourhood Development Plan

Policy S1: Siddington Gap



COTSWOLD
District Council

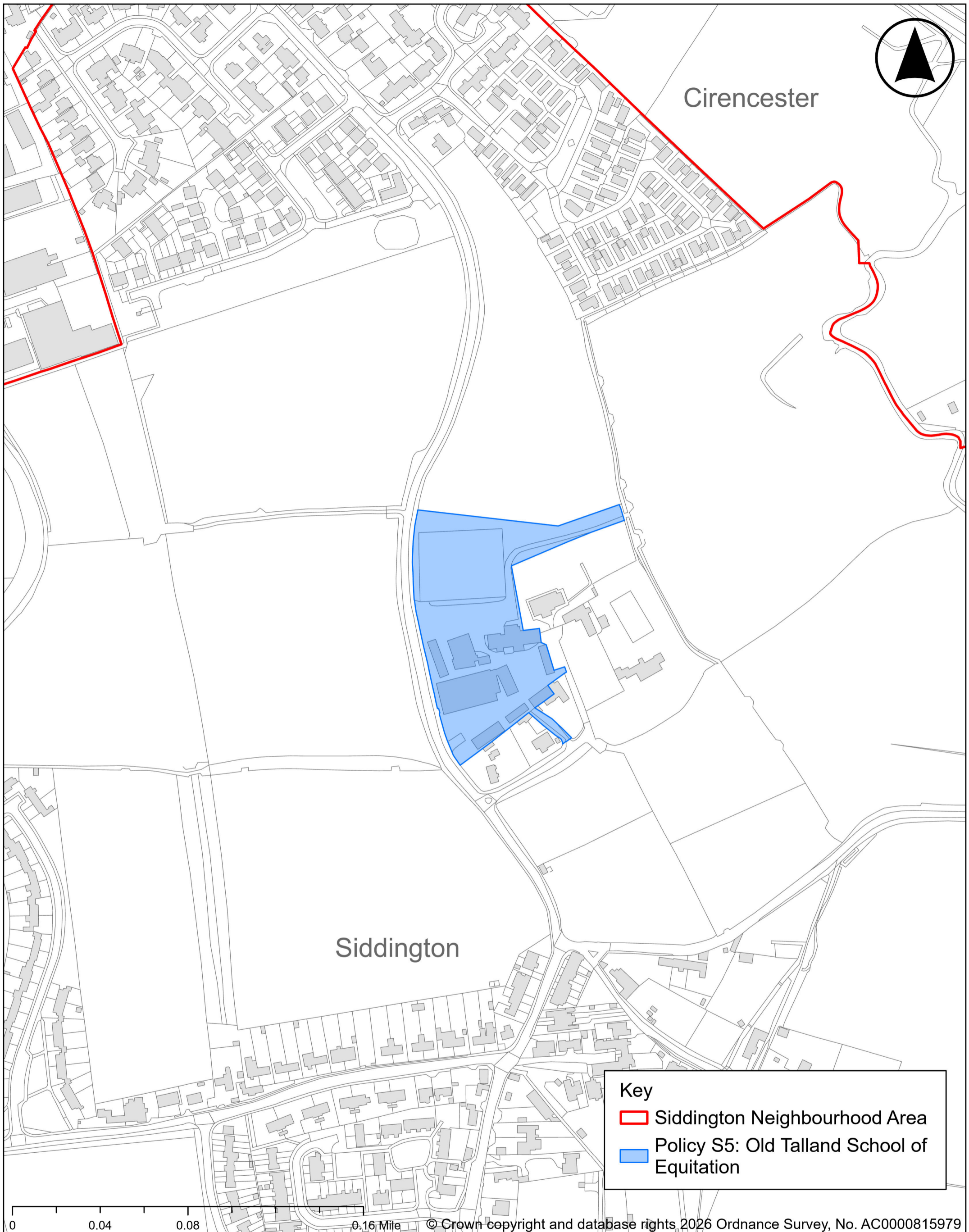


Siddington Parish Neighbourhood Development Plan

Policy S2: Development Boundary



COTSWOLD
District Council



Siddington Parish Neighbourhood Development Plan

Policy S5: Old Talland School of Equitation



COTSWOLD
District Council



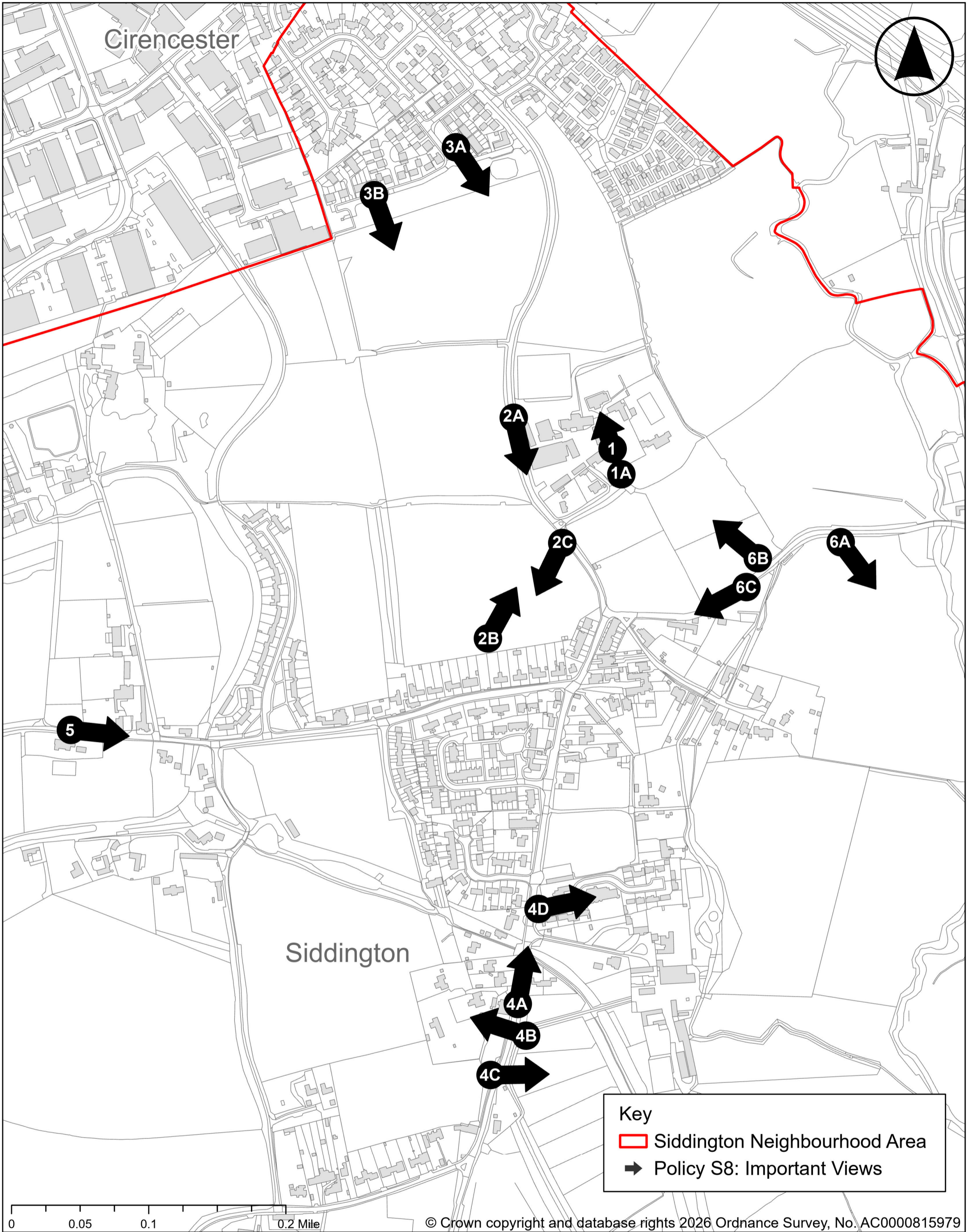
Siddington Parish Neighbourhood Development Plan

Policy S6: Local Green Space



COTSWOLD
District Council

© Crown copyright and database rights 2026 Ordnance Survey, No. AC0000815979

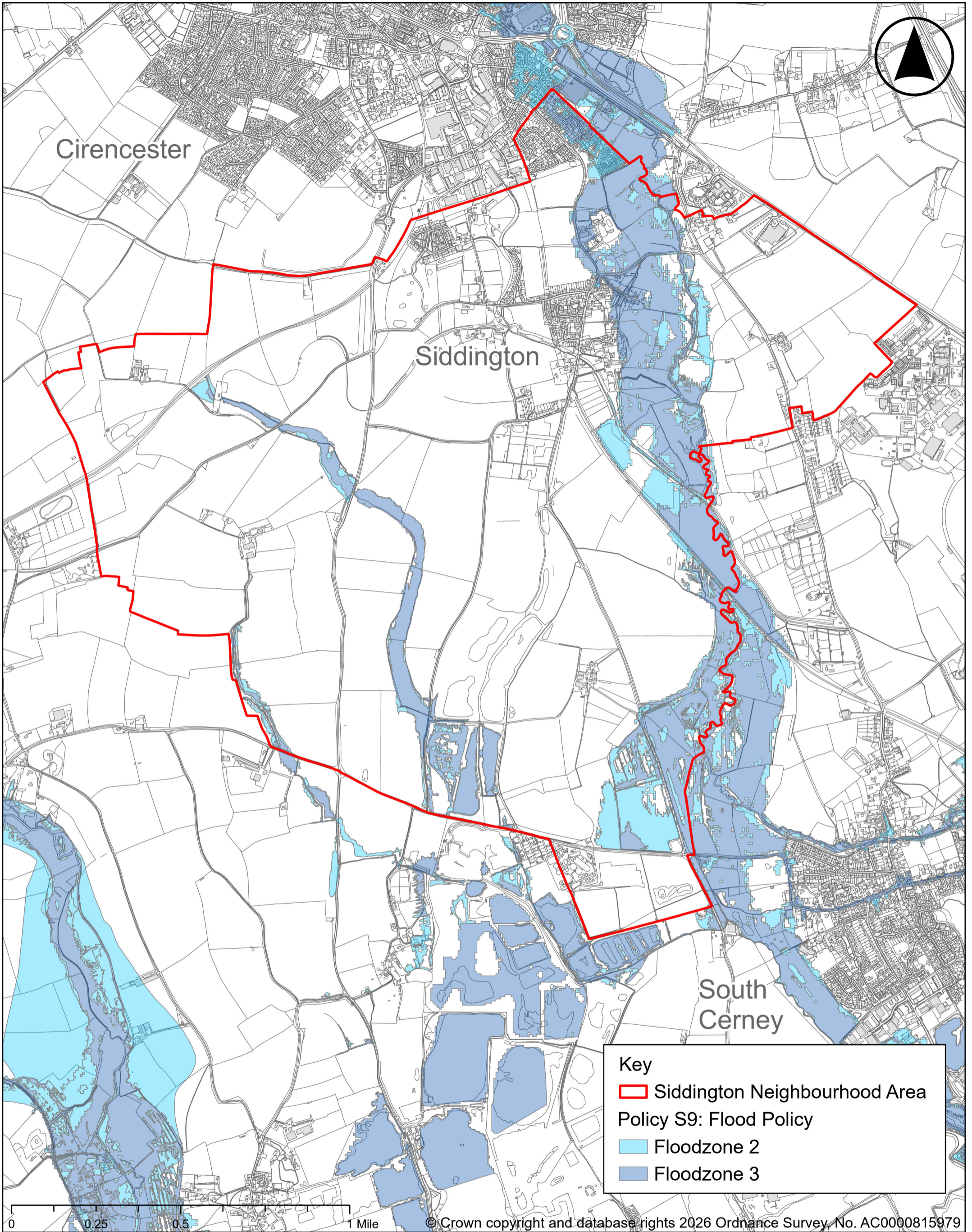


Siddington Parish Neighbourhood Development Plan

Policy S8: Important Views



COTSWOLD
 District Council



Key

- Siddington Neighbourhood Area
- Policy S9: Flood Policy
- Floodzone 2
- Floodzone 3

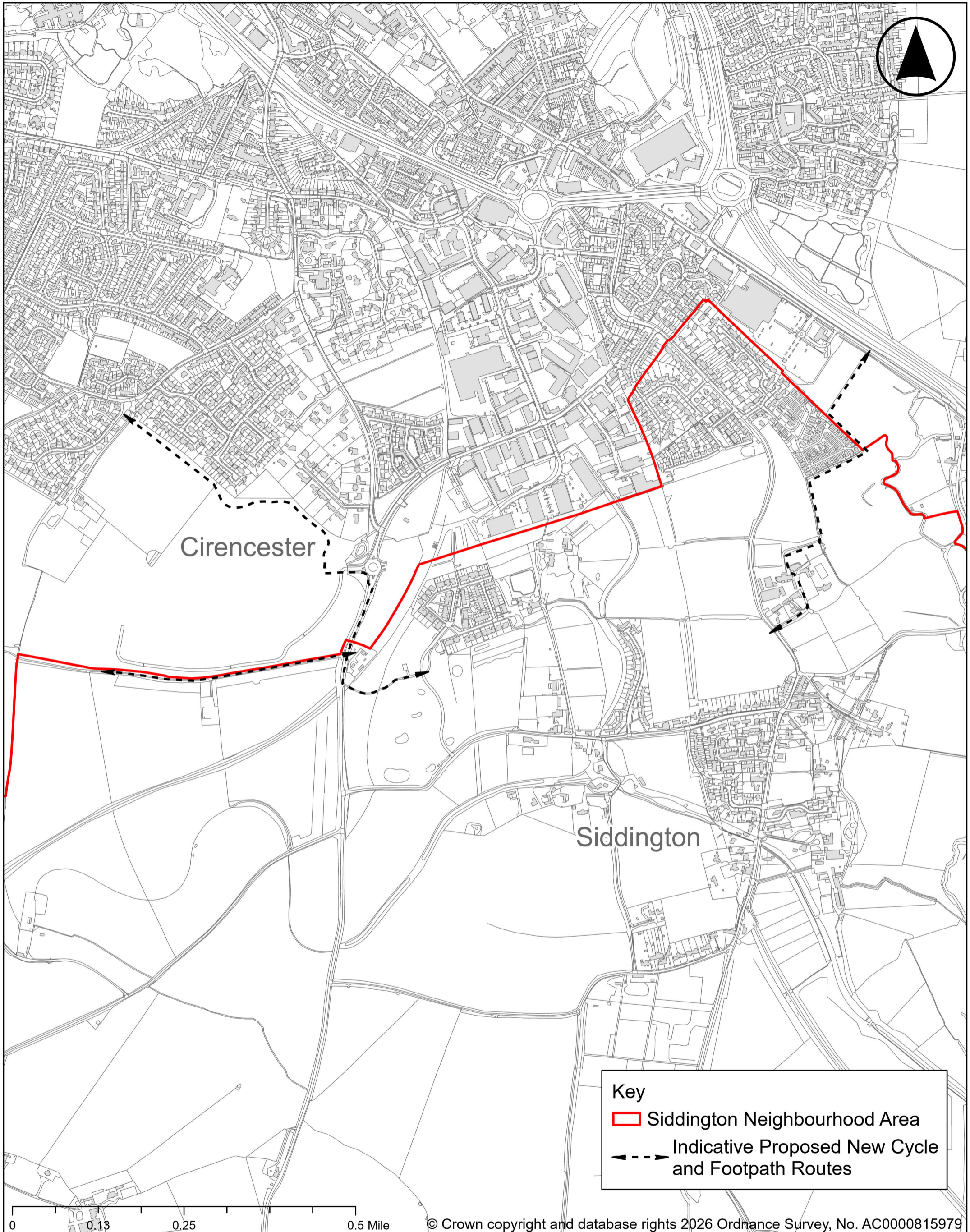
0 0.25 0.5 1 Mile © Crown copyright and database rights 2026 Ordnance Survey, No. AC0000815979

Siddington Parish Neighbourhood Development Plan

Policy S9: Flood Policy



COTSWOLD
District Council



Siddington Parish Neighbourhood Development Plan

Policy S10: Sustainable Transport and Active Travel
 - Indicative Proposed New Cycle and Footpath Routes



COTSWOLD
 District Council